



## MISCELLANEOUS



[www.alggin.com](http://www.alggin.com)

**CALGARY**  
4540 46th Avenue SE  
(403) 252-0132  
[sales@alggin.com](mailto:sales@alggin.com)

**EDMONTON**  
12110 154 St. NW  
(780) 424-0132  
[edmsales@alggin.com](mailto:edmsales@alggin.com)

**LETHBRIDGE**  
1126 36 St. N  
(403) 320-8732  
[letsales@alggin.com](mailto:letsales@alggin.com)



## MISCELLANEOUS INDEX

ITEM	PAGE	ITEM	PAGE
Access Doors	4	Joist Liner – Coroplast	10
Actuators	3	Joist Liner – Thermopan	10
Anchors	11	Latch	15
Beam Clamps	11	Leak Detector	1
Blast Gates – Full Collar	4	Paint (Spray)	15
Bolts	8	Polyethylene Film Duct Wrap	11
Cable Lock	12	Rain Caps – Wind Resistant	6
Ceiling Flanges	11	Redi Rods	8
Clips – Q-Deck, Ludwig	10	Rod Couplers	11
CO Detector	1	Roof Blox	15
Crimp Sleeve	12	S-Hook	11
Damper hardware	15	Screws	7, 8
Draft Diverters	6	Sealants & Adhesives	9
Drift Pins	11	Solder	15
Dryer Vent Box	6	Stove Pipe Wire	15
Duct Connectors (Flexible)	13	Suspension Strap	11
Duct Hangers – Unistrut	12	Tape	11
Duct Hardware	14	TDC Corners & Tools	13
Duct Liner	9	Templates (Fittings)	15
Ductmate Flange & Accessories	13	Thermostats	1
Easy Rod	13	Thermostat Guards	1
Filters – Furnace	6	Thermostat Wire	1
Fire Dampers	5	Threaded Rod, Washers, Nuts	8
Floor Sweep for Dust Collection	4	Tie Straps	15
Fusible Links	5	Vapor Barrier	15
Gaskets	10	Vibration Pad	15
Hose Clamps	10	Wire Rope	12
Hoyme Dampers	5	Zone System	2
Insulation – F.S.K.	9		
Insulation Fasteners	14		
Isolation Hanger	8		

**THERMOSTATS**

**Honeywell Home**

**AprilAire**  
**resideo**

<u>STOCK #</u>	<u>DESCRIPTION</u>	<u>PRICE</u>
STAT1HT024	T812A MECHANICAL - 24V - HEAT ONLY	\$45.62
STATDIGINP	PRO1000 NON-PROGRAMMABLE 1 STAGE	\$77.02
STAT1HX120	T410A - 120V - HEAT ONLY	\$44.63
STATT1PRO1H1C	TH1110D2009 - T1 PRO - 1 HEAT / 1 COOL	\$90.37
STATT4PRO1H1C	TH4110U2005 - T4 PRO - 1 HEAT / 1 COOL	\$121.14
STATT6PRO1H1C	TH62100U2001 - T6 PRO - 1 HEAT / 1 COOL	\$172.85
STATT6PRO2H2C	TH6220U2000 - T6 PRO - 2 HEAT / 2 COOL	\$233.36
STATT6PROSLAB	TH6100AF2004 - T6 PRO - 1 HEAT SLAB SENSOR	\$262.81
STATT6WIFI	TH6220WF2006 - T6 PRO - TRADE WIFI	\$322.56
STATT6WIFIHRV	TH6320WF2003 - T6 PRO - WIFI WITH HRV CONTROL	\$434.26
STATVISPRO1H1C	TH8110R1008 - VISION PRO 8000 1 HEAT / 1 COOL	\$466.42
STATVISPRO3H2C	TH8321R1001 - VISION PRO 8000 3 HEAT / 2 COOL	\$570.55
STATPRO8000WIFI	PRO8000 WIFI THERMOSTAT	\$527.87
STATT10WSENSOR	THX321WFS2001W - T10 SMART RedLINK WITH 1 ID SENSOR	\$585.27
STAT1CX120	ROBERT SHAW MODEL #803A 1 STAGE COOLING 120 V	\$64.00
A8920W	AprilAIRE UNIVERSAL TOUCH SCREEN WI-FI, IAQ THERMOSTAT	\$782.97



**ACCESSORIES**

<u>STOCK #</u>	<u>DESCRIPTION</u>	<u>PRICE</u>
HC7189R2002	2PK RedLINK 3.0 INDOOR SENSOR FOR T-10 STAT	\$223.59
HCHW3610W1001	CHW3610W1001 - WIFI LEAK AND FREEZE DETECTOR	\$203.28
HDG115EZIAQ	DG115EZIAQ - TRUE IAQ DIGITAL IAQ CONTROL	\$138.66
HTHM5320R1000	THM5320R1000 - WIRELESS INTERFACE MODULE	\$385.90
COALARM	BATTERY OPERATED CARBON MONOXIDE ALARM	\$64.02
GSTATWIRE3	THERMOSTAT WIRE - 3 WIRE / per foot	\$1.82
GSTATWIRE6	THERMOSTAT WIRE - 6 WIRE / per foot	\$1.68
STATGUARDCL	5 1/4" X 4 3/8" X 3" CLASSIC	\$54.04
STATGUARDR	6 3/8" X 3 1/2" X 3" REGAL	\$30.43



**HONEYWELL HOME HELP LINE 1-855-381-3530**



**ZONE SYSTEM**

**Honeywell Home**

**resideo**

**AUTOMATIC DAMPER**

<u>STOCK #</u>	<u>SIZE</u>	<u>PRICE</u>
RARD6TZU	6"	\$228.91
RARD8TZU	8"	\$236.90

**TrueZONE BYPASS DAMPER**

<u>STOCK #</u>	<u>SIZE</u>	<u>PRICE</u>
RCPRD8U	8"	\$194.83
RCPRD10U	10"	\$202.62
RCPRD12U	12"	\$207.32
RCPRD14U	14"	\$227.31

**PARALLEL BLADE DAMPER**

<u>STOCK #</u>	<u>SIZE</u>	<u>PRICE</u>
RZD8X12TZU	8" X 12"	\$308.10
RZD8X14TZU	8" X 14"	\$312.66
RZD8X16TZU	8" X 16"	\$316.08



**TrueZONE PANEL KIT**

(includes control panel, transformer, discharge air temperature sensor)

<u>STOCK #</u>	<u>SIZE</u>	<u>PRICE</u>
RHZ322KU	3 Zone	\$394.79



**ZONE DAMPER ROUND**

<u>STOCK #</u>	<u>SIZE</u>	<u>PRICE</u>
A6606	6"	\$171.86
A6608	8"	\$187.31
A6610	10"	\$192.14
A6612	12"	\$210.48

**SIDE MOUNT DAMPER**

<u>STOCK #</u>	<u>SIZE</u>	<u>PRICE</u>
A6722	8" X 10"	\$246.21
A6723	8" X 12"	\$251.03
A6724	8" X 14"	\$255.86
A6725	8" X 16"	\$260.69
A6727	8" X 20"	\$268.41

**BOTTOM MOUNT DAMPER**

<u>STOCK #</u>	<u>SIZE</u>	<u>PRICE</u>
A6812	8" X 10"	\$239.45
A6813	8" X 12"	\$251.03
A6814	8" X 14"	\$255.86
A6815	8" X 16"	\$260.69
A6817	8" X 20"	\$268.41
A6818	8" X 22"	\$276.14
A6819	8" X 24"	\$280.00
A6824	10" x 14"	\$268.41
A6825	10" X 16"	\$271.31



**ZONE CONTROL PANEL**

<u>STOCK #</u>	<u>SIZE</u>	<u>PRICE</u>
A6404	4 Zone	\$366.90



**Other sizes available, contact your AlggIn representative for pricing and availability**

Prices are F.O.B. our warehouse and subject to change without notice. All taxes extra.



**ACTUATORS**

<u>STOCK #</u>	<u>DESCRIPTION</u>	<u>PRICE</u>
BAFB24	180 IN-LBS, SPRING RETURN, 24VAC/DC, ON-OFF	\$676.55
BAFB24S	180 IN-LBS, SPRING RETURN, 24VAC/DC, ON-OFF WITH SWITCH	\$804.95
BLF120	35 IN-LBS, SPRING RETURN, 120VAC, ON-OFF	\$486.90
BLF120S	35 IN-LBS, SPRING RETURN, 120VAC, ON-OFF WITH SWITCH	\$564.90
BLF24	35 IN-LBS, SPRING RETURN, 24VAC/DC, ON-OFF	\$439.80
BLF24S	35 IN-LBS, SPRING RETURN, 24VAC/DC, ON-OFF WITH SWITCH	\$516.50
BNFB24	90 IN-LBS, SPRING RETURN, 24AC/DC, ON-OFF	\$540.70
BNFB24S	90 IN-LBS, SPRING RETURN, 24AC/DC, ON-OFF WITH SWITCH	\$669.80
BTFB120	22 IN-LBS, SPRING RETURN, 120VAC, ON-OFF	\$418.30
BTFB120S	22 IN-LBS, SPRING RETURN, 120VAC, ON-OFF WITH SWITCH	\$493.60
BTFB24	22 IN-LBS, SPRING RETURN, 24VAC/DC, ON-OFF	\$358.45
BTFB24S	22 IN-LBS, SPRING RETURN, 24VAC/DC, ON-OFF WITH SWITCH	\$435.10

**Honeywell**



<u>STOCK #</u>	<u>DESCRIPTION</u>	<u>PRICE</u>
HMS4103A1030	27# - 100-250V - SPRING RETURN ACTUATOR	\$763.56
HMS4103A1130	27# - 100-250V - SPRING RETURN ACTUATOR WITH SWITCH	\$842.15
HMS4105A1030	44# - 100-250V - SPRING RETURN ACTUATOR	\$839.12
HMS4105A1130	44# - 100-250V - SPRING RETURN ACTUATOR WITH SWITCH	\$899.62
HMS4110A1002	88# - 100-250V - SPRING RETURN ACTUATOR	\$605.00
HMS4110A1200	88# - 100-250V - SPRING RETURN ACTUATOR WITH SWITCH	\$1,103.31
HMS4120A1001	175# - 100-250V - SPRING RETURN ACTUATOR	\$1,200.22
HMS4120A1209	175# - 100-250V - SPRING RETURN ACTUATOR WITH SWITCH	\$915.92
HMS8103A1030	27# - 24V - SPRING RETURN ACTUATOR	\$619.94
HMS8103A1130	27# - 24V - SPRING RETURN ACTUATOR WITH SWITCH	\$831.59
HMS8105A1030	44# - 24V - SPRING RETURN ACTUATOR	\$370.90
HMS8105A1130	44# - 24V - SPRING RETURN ACTUATOR WITH SWITCH	\$321.00
HMS8110A1008	88# - 24V - SPRING RETURN ACTUATOR	\$837.21
HMS8110A1206	88# - 24V - SPRING RETURN ACTUATOR WITH SWITCH	\$997.92
HMS8120A1007	175# - 24V - SPRING RETURN ACTUATOR	\$1,038.45
HMS8120A1205	175# - 24V - SPRING RETURN ACTUATOR WITH SWITCH	\$784.09



### **BLAST GATES - FULL COLLAR**

<u>STOCK #</u>	<u>SIZE</u>	<u>PRICE</u>
BLASGATE03	3"	\$49.18
BLASGATE04	4"	\$49.78
BLASGATE05	5"	\$66.99
BLASGATE06	6"	\$83.88
BLASGATE07	7"	\$106.21



<u>STOCK #</u>	<u>SIZE</u>	<u>PRICE</u>
BLASGATE08	8"	\$141.21
BLASGATE10	10"	\$275.17
BLASGATE12	12"	\$295.69

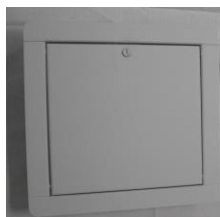
### **FLOOR SWEEP - FOR DUST COLLECTION**

FLOORSWEEP6                      6" 16g Floor Sweep                      \$274.47

\*\*\*\* Other sizes available upon request \*\*\*\*

### **DRYWALL ACCESS DOORS**

<u>STOCK #</u>	<u>SIZE</u>	<u>PRICE</u>
ACCDRY0808	8" x 8"	\$36.63
ACCDRY1212	12" x 12"	\$44.72
ACCDRY1616	16" x 16"	\$71.33
ACCDRY1818	18" x 18"	\$91.77
ACCDRY2424	24" x 24"	\$152.95



### **DUCT ACCESS DOORS**

<u>STOCK #</u>	<u>MODEL #</u>	<u>DESCRIPTION</u>	<u>PRICE</u>
ACCDCT0805	800-1	8 x 5 Oval	\$32.16
ACCDCT1206	810-1	12 x 6 Oval	\$41.56
ACCDCT1810	820-1	18 x 10 Oval	\$69.21
ACCDCT2114	830-1	21 x 14 Oval	\$118.46
ACCDCT2517	850-1	25 x 17 Oval	\$145.93



### **KITCHEN EXHAUST ACCESS DOORS**

<u>STOCK #</u>	<u>SIZE</u>	<u>PRICE</u>
KITEXH0808	8 X 8	\$120.00
KITEXH1008	10 x 8	\$123.50
KITEXH1010	10 X 10	\$129.00
KITEXH1212	12 X 12	\$144.00

\* Fire rated access doors available upon request

### **SANDWICH STYLE ACCESS DOORS - ROUND DUCT**

<u>STOCK #</u>	<u>SIZE</u>	<u>DESCRIPTION</u>	<u>PRICE</u>
ACCDRI846	8 x 4	5" - 6" Insulated	\$51.07
ACCDRI849	8 x 4	7" - 9" Insulated	\$51.07
ACCDRU12811	12 x 8	10" - 11" Uninsulated	\$72.40
ACCDRU12814	12 x 8	12" - 14" Uninsulated	\$72.40
ACCDRU846	8 x 4	5" - 6" Uninsulated	\$51.04
ACCDRU849	8 x 4	7" - 9" Uninsulated	\$51.04



## FIRE DAMPERS - TYPE C

### HORIZONTAL

<u>STOCK #</u>	<u>SIZE</u>	<u>PRICE</u>
FIRECH04XX	4"	\$86.86
FIRECH05XX	5"	\$86.86
FIRECH06XX	6"	\$86.86
FIRECH08XX	8"	\$97.70
FIRECH10XX	10"	\$103.14
FIRECH12XX	12"	\$114.00
FIRECH14XX	14"	\$162.86



\*Other sizes including rectangular and square, are available upon request.

## FUSIBLE LINKS

<u>STOCK #</u>	<u>DESCRIPTION</u>	<u>PRICE</u>
FUS165DEGX	165°	\$13.57
FUS212DEGX	212°	\$15.10



**HMI HOYME**  
**MANUFACTURING INC.**  
 "Putting a Damper on Cold Air"  
 ~For over 30 years~

<u>STOCK #</u>	<u>DESCRIPTION</u>	<u>PRICE</u>
HAC04XXXXX	4" HAC Damper OPO	\$179.00
HAC05XXXXX	5" HAC Damper OPO	\$182.00
HAC06XXXXX	5" HAC Damper OPO	\$184.00





## RAIN CAPS - WIND RESISTANT

<u>STOCK #</u>	<u>DESCRIPTION</u>	<u>PRICE</u>
WINDTECH03	3" HIGH WIND CAP	\$29.75
WINDTECH04	4" HIGH WIND CAP	\$29.75
WINDTECH05	5" HIGH WIND CAP	\$39.75
WINDTECH06	6" HIGH WIND CAP	\$51.50
WINDTECH07	7" HIGH WIND CAP	\$83.00
WINDTECH08	8" HIGH WIND CAP	\$88.00
WINDTECH10	10" HIGH WIND CAP	\$229.00
WINDTECH12	12" HIGH WIND CAP	\$322.00



## DRAFT DIVERTERS

Vertical Draft Diverters available in sizes 3" through 8"  
Call your Alggin representative for pricing



## FILTERS - DISPOSABLE (PACKAGE OF 3)

<u>STOCK #</u>	<u>DESCRIPTION</u>	<u>PRICE / PKG</u>
FILXX16201	16" X 20" X 1" DISPOSABLE FILTER	\$15.65
FILXX16251	16" X 25" X 1" DISPOSABLE FILTER	\$15.65
FILXX20251	20" X 25" X 1" DISPOSABLE FILTER	\$15.65



## FILTERS - MERV 11

<u>STOCK #</u>	<u>DESCRIPTION</u>	<u>PRICE</u>
FILM1116201	16" X 20" X 1" MERV 11 FILTER	\$14.00
FILM1116251	16" X 25" X 1" MERV 11 FILTER	\$14.00
FILM1120201	20" X 20" X 1" MERV 11 FILTER	\$13.46
FILM1120251	20" X 25" X 1" MERV 11 FILTER	\$16.00
FILM1116204	16" X 20" X 4" MERV 11 FILTER	\$38.25
FILM1116254	16" X 25" X 4" MERV 11 FILTER	\$39.25
FILM1120204	20" X 20" X 4" MERV 11 FILTER	\$34.97
FILM1120254	20" X 25" X 4" MERV 11 FILTER	\$43.00



## DRYER VENT BOX

DRYERBOX	4" DRYER BOX	\$66.00
DRYERBOXRING	METAL TRIM RING FOR DRYER BOX	\$20.00



## B-VENT METAL SCREWS

<u>STOCK #</u>	<u>DESCRIPTION</u>	<u>PRICE/100</u>
SMSBVENT14	#8 x 1/4"	\$7.22

## SHEET METAL SCREWS - PAN HEAD SOCKET

<u>STOCK #</u>	<u>DESCRIPTION</u>	<u>PRICE/100</u>	<u>STOCK #</u>	<u>DESCRIPTION</u>	<u>PRICE/100</u>
SMS08050PH	#8 x 1/2"	\$6.75			
SMS08075PH	#8 x 3/4"	\$8.60	SMS10075PH	#10 x 3/4"	\$9.60
SMS08100PH	#8 x 1"	\$9.83	SMS10100PH	#10 x 1"	\$10.95
SMS08150PH	#8 x 1 1/2"	\$12.80	SMS10150PH	#10 x 1 1/2"	\$15.32
SMS08200PH	#8 x 2"	\$14.25	SMS10200PH	#10 x 2"	\$23.27
SMS08250PH	#8 x 2 1/2"	\$27.41			
SMS08300PH	#8 x 3"	\$26.57			



## SHEET METAL SCREWS - HEX HEAD

<u>STOCK #</u>	<u>DESCRIPTION</u>	<u>PRICE/100</u>
SMS08050HH	#8 x 1/2"	\$11.56

## SHEET METAL SCREWS - DRILL POINT

<u>PAN HEAD SOCKET</u>			<u>HEX HEAD</u>		
<u>STOCK #</u>	<u>DESCRIPTION</u>	<u>PRICE/100</u>	<u>STOCK #</u>	<u>DESCRIPTION</u>	<u>PRICE/100</u>
SMS0850PTK	#8 x 1/2"	\$6.72	SMS0850HTK	#8 x 1/2"	\$8.23
SMS0875PTK	#8 x 3/4"	\$7.31	SMS0875HTK	#8 x 3/4"	\$7.95
SMS0810PTK	#8 x 1"	\$10.67	SMS0810HTK	#8 x 1"	\$11.65
SMS1075PTK	#10 x 3/4"	\$10.36	SMS1075HTK	#10 x 3/4"	\$13.16
SMS1010PTK	#10 x 1"	\$16.20	SMS1010HTK	#10 x 1"	\$13.69

## PAN HEAD SOCKET & HEX HEAD SELF TAPPING SCREWS

#8 x 9/16 Screw

<u>PAN HEAD SOCKET SCREWS</u>			<u>HEX HEAD DRILL SCREWS</u>		
<u>STOCK #</u>	<u>DESCRIPTION</u>	<u>PRICE/PACK</u>	<u>STOCK #</u>	<u>DESCRIPTION</u>	<u>PRICE/PACK</u>
SMS850PHSP	Single pack (1000)	\$91.84	SMS850HHSP	Single pack (1000)	\$90.86
SMS850PHBX	Bulk pack (12000)	\$467.04			



## SCREWS - DRILL POINT

#8 x 1/2"

PAN HEAD SOCKET TEK			HEX TEK		
<u>STOCK #</u>	<u>DESCRIPTION</u>	<u>PRICE/PACK</u>	<u>STOCK #</u>	<u>DESCRIPTION</u>	<u>PRICE/PACK</u>
SMS850PTSP	Single pack (1000)	\$70.28	SMS850HTSP	Single pack (1000)	\$86.24
SMS850PTBX	Bulk pack (15000)	\$789.60			

## SCREWS - DRILL POINT

#10 x 3/4"

PAN HEAD SOCKET TEK			HEX TEK		
<u>STOCK #</u>	<u>DESCRIPTION</u>	<u>PRICE/JAR</u>	<u>STOCK #</u>	<u>DESCRIPTION</u>	<u>PRICE/JAR</u>
SMS1075PTJ	#10 x 3/4"	\$114.52	SMS1075HTJ800	#10 x 3/4"	\$93.50

## STOVE BOLTS (Round Head)

(100 PACK)

<u>STOCK #</u>	<u>DESCRIPTION</u>	<u>PRICE/100</u>	<u>STOCK #</u>	<u>DESCRIPTION</u>	<u>PRICE/100</u>
SMS14100RH	1/4" x 1"	\$21.56	SMS14200RH	1/4" x 2"	\$24.08

## THREADED ROD, WASHERS & NUTS

1/4"			3/8"		
<u>STOCK #</u>	<u>DESCRIPTION</u>	<u>PRICE</u>	<u>STOCK #</u>	<u>DESCRIPTION</u>	<u>PRICE</u>
REDIRODS14	REDI ROD	\$9.47 per length	REDIRODS38	REDI ROD	\$9.24 per length
REDINUTS14	NUTS	\$7.36 per 100	REDINUTS38	NUTS	\$14.64 per 100
REDILOCK14	LOCK WASHER	\$3.64 per 100	REDILOCK38	LOCK WASHER	\$9.77 per 100
REDIFLAT14	FLAT WASHER	\$7.53 per 100	REDIFLAT38	FLAT WASHER	\$18.87 per 100
FENWASHR14	FENDER WASHER	\$27.89 per 100	FENWASHR38	FENDER WASHER	\$54.35 per 100

## ISOLATION HANGER

<u>STOCK #</u>	<u>DESCRIPTION</u>	<u>PRICE</u>
ISOLATHNGR	ISOLATION HANGER	\$25.79

## BOLTS

<u>STOCK #</u>	<u>DESCRIPTION</u>	<u>PRICE</u>
BOLTCA3801	CARRIAGE BOLTS 3/8" X 1" - per 100	\$59.67
PINBOLTSXX	PIN BOLTS - per 100	\$40.32
TOGGLE14X3	TOGGLE BOLTS - 1/4" X 3" per box of 50	\$51.25
EYEBOLT141	EYE BOLTS - 1/4" x 1" per bag of 10	\$14.56
EYEBOLT381	EYE BOLTS - 3/8" x 1" per bag of 10	\$31.65



## DUCT LINER - PER SQUARE FOOT

<u>STOCK #</u>	<u>DESCRIPTION</u>	<u>PRICE</u>
DKLIN050CT	1/2" DUCT LINER	\$1.85
DKLIN100CT	1" DUCT LINER	\$2.42
DKLIN200CT	2" DUCT LINER	\$4.85



## REINFORCED FOIL INSULATION "F.S.K."

<u>STOCK #</u>	<u>PRICE / SQ FT</u>
INSULFSKCT	\$1.65

1" x 48" x 100 Ft. (400 Sq. Ft.) per roll



## SEALANTS & ADHESIVES

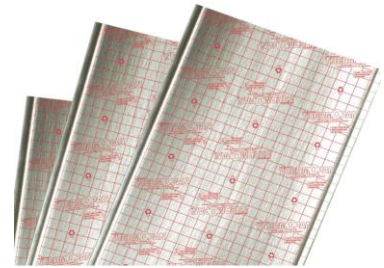
<u>STOCK #</u>	<u>DESCRIPTION</u>	<u>PRICE</u>	
SEASLCONC	ALGGIN SILICONE SEALANT - CLEAR	\$23.71	per tube
SEASLCONW	ALGGIN SILICONE SEALANT - WHITE	\$23.71	per tube
SEASLCONG	ALGGIN SILICONE SEALANT - GREY/ALUMINUM	\$23.71	per tube
SEALXCAULK	ALGGIN CAULKING COMPOUND	\$25.69	per tube
SEALHITEMP	ALGGIN HIGH TEMPERATURE SEALANT	\$30.75	per tube
SEALDOSGAL	DYN AIR "DYN-O-SEAL" H.V. DUCT SEALER WATER BASE	\$38.06	per gallon
SEALDOSCTG	DYN AIR "DYN-O-SEAL" H.V. DUCT SEALER WATER BASE	\$7.69	per tube
SEALSG404GAL	DYN AIR "SURE-GRIP" H.V. DUCT SEALER SOLVENT BASE	\$113.31	per gallon
SEALEVERGAL	DUCTMATE "EVERseal" DUCT SEALER WATER BASE	\$42.43	per gallon
SEALCEMENT	RESISTO SUPER ROOF REPAIR	\$20.36	per gallon





### JOIST LINER - THERMOPAN

<u>STOCK #</u>	<u>DESCRIPTION</u>	<u>PRICE</u>
THERMO1648	16" X 48" CORRUGATED JOIST LINER	\$7.54
THERMO1948	19" X 48" CORRUGATED JOIST LINER	\$9.16
THERMO2448	24" X 48" CORRUGATED JOIST LINER	\$11.49



### JOIST LINER - COROPLAST

<u>STOCK #</u>	<u>DESCRIPTION</u>	<u>PRICE</u>
COROPLST1648	16" X 48" PLASTIC JOIST LINER	\$6.77
COROPLST2148	21" X 48" PLASTIC JOIST LINER	\$7.00
COROPLST2448	24" X 48" PLASTIC JOIST LINER	\$9.19



### GASKETS - PER ROLL

<u>STOCK #</u>	<u>TYPE</u>	<u>SIZE</u>	<u>PRICE</u>
GASKET1812	NEOPRENE	1/8" x 1/2" x 50'	\$19.11
GASKET1834	NEOPRENE	1/8" x 3/4" x 50'	\$24.26
GASKET1810	NEOPRENE	1/8" x 1" x 50'	\$31.97
GASKET1434	NEOPRENE	1/4" x 3/4" x 37.5'	\$31.39
GASKET3834	NEOPRENE	3/8" x 3/4" x 25'	\$24.88
GASKET3810	NEOPRENE	3/8" x 1" x 25'	\$31.57
GASKET1212	NEOPRENE	1/2" x 1 1/2" x 25'	\$57.68
GASKETHOT100	HIGH TEMP	1/8" x 1" x 100'	\$353.50
GASKETHOT200	HIGH TEMP	1/8" x 2" x 100'	\$450.45



### HOSE CLAMPS

<u>STOCK #</u>	<u>MODEL #</u>	<u>RANGE</u>	<u>PRICE</u>
CLAMPXHS48	HS48	2 9/16" to 3 1/2"	\$3.42
CLAMPXHS64	HS64	3 9/16" to 4 1/2"	\$4.70
CLAMPXHS96	HS96	4 1/2" to 6 1/2"	\$4.54
CLAMPHS128	HS128	6 1/2" to 8 1/2"	\$6.66
CLAMPHS164	HS164	8 3/4" to 10 3/4"	\$12.63



### CLIPS - Q-DECK, LUDWIG

<u>STOCK #</u>	<u>DESCRIPTION</u>	<u>PRICE</u>
CLIPQDEC14	Q - DECK CLIPS 1/4" each	\$4.37
CLIPQDEC38	Q - DECK CLIPS 3/8" each	\$4.37
CL IPLUDWIG	LUDWIG CLIPS each	\$2.88



## SUSPENSION STRAP

<u>STOCK #</u>	<u>DESCRIPTION</u>	<u>PRICE</u>
SUSPST3425	3/4" X 25' - 20 GA.	\$5.96
SUSPST341C	3/4" X 100' - 20 GA.	\$22.50



## TAPE

<u>STOCK #</u>	<u>DESCRIPTION</u>	<u>PRICE</u>
TAPEDUCT02	2" x 60 Yd. CLOTH DUCT TAPE	\$15.82
TAPEPLN002	2" x 50 Yd. ALUM. FOIL TAPE-PLAIN	\$17.01
TAPEBUTY34	BUTYL TAPE 3/16" X 3/4" 25' ROLL	\$16.21
TAPEAFT701	ALUMA-GRIP AFT-701 TAPE 3" X 50' ROLL	\$85.51
TAPEFLXSIL	FLEXIBLE DUCT TAPE - SILVER 48 mm X 100 m	\$44.50
DYNFS150XX	FIBERGLASS SCRIM TAPE 3" X 150'	\$41.20



## POLYETHYLENE FILM - DUCT WRAP

<u>STOCK #</u>	<u>DESCRIPTION</u>	<u>PRICE</u>
PROGUARD24	24" X 200FT POLYETHYLENE FILM	\$79.75
PROGUARD36	36" X 200FT POLYETHYLENE FILM	\$119.60



## ANCHORS

<u>STOCK #</u>	<u>DESCRIPTION</u>	<u>PRICE</u>
DROPINAN14	DROP IN ANCHORS 1/4" - BOX OF 100	\$45.81
DROPINAN38	DROP IN ANCHORS 3/8" - BOX OF 50	\$30.86
EZANCHORS	E-Z ANCHORS (DRY WALL) - BOX OF 100	\$76.27
EYELAG14X2	1/4" x 2" DRILL POINT SCREW EYE - BOX OF 100	\$74.00
EYELAGDRVBIT	EYELAG DRIVER BIT	\$23.88
WEDANCHORS14	1/4" X 1 1/4" TIE WIRE WEDGE ANCHOR - BOX OF 100	\$62.47



## CEILING FLANGES, CLAMPS, COUPLERS, DRIFT PINS

<u>STOCK #</u>	<u>DESCRIPTION</u>	<u>PRICE</u>
CEILFLAN14	CEILING FLANGE - 1/4"	\$4.37
CEILFLAN38	CEILING FLANGE - 3/8"	\$4.37
BEAMCLAM14	UNIVERSAL BEAM CLAMP - 1/4"	\$5.18
BEAMCLAM38	UNIVERSAL BEAM CLAMP - 3/8"	\$5.18
RODCPLER14	ROD COUPLER - 1/4"	\$0.39
RODCPLER38	ROD COUPLER - 3/8"	\$0.84
DRIFTPIN14	DRIFT PIN - 1/4"	\$7.45
DRIFTPIN38	DRIFT PIN - 3/8"	\$10.56
SHOOK218X58	2 1/8" x 5/8" S-HOOK (10/bag)	\$9.24





## HANGER SYSTEM MATERIALS

### DYNA-TITE CABLE LOCK HANGING SYSTEM

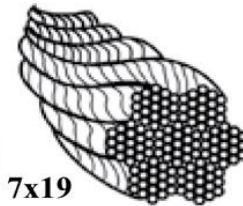
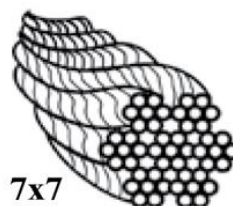
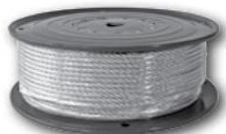
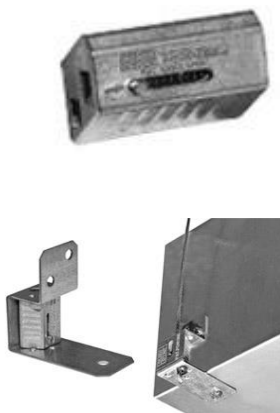
#### WIRE ROPE

<u>STOCK #</u>	<u>MODEL #</u>	<u>DESCRIPTION</u>	<u>FEET/ SPOOL</u>	<u>PRICE/ SPOOL</u>
WIRECL12	WC3-CL12	WIRE ROPE (WC3-CL12) 500' SPOOL	500	\$108.25
WIRECL18	WC4-CL18	WIRE ROPE (WC4-CL18) 500' SPOOL	500	\$150.30

#### CABLE LOCKS

<u>STOCK #</u>	<u>MODEL #</u>	<u>DESCRIPTION</u>	<u>PRICE PER BAG</u>
CABLELCK12	CL12	CL12 CABLE LOCK 125 LB (BAG / 100)	\$485.00
CABLELCK18	CL18	CL18 CABLE LOCK 250 LB (BOX / 100)	\$730.00

<u>STOCK #</u>	<u>MODEL #</u>	<u>DESCRIPTION</u>	<u>PRICE / EA</u>	<u>BOX QTY.</u>
DURO30361X	KV12	BRACKET ASSEMBLY W/ CL12 CABLE LOCK	\$8.90	10



#### CRIMP SLEEVE

<u>STOCK #</u>	<u>DESCRIPTION</u>	<u>PRICE</u>
CBLECRIMP332	3/32" CABLE CRIMP SLEEVE ALUM #10 - BAG OF 100	\$36.40 per bag

#### DUCT HANGER - UNISTRUT

<u>STOCK #</u>	<u>DESCRIPTION</u>	<u>PRICE</u>
UNISTRUT158	UNISTRUT 1 5/8" - 10' LENGTH	\$58.34 per length
UNINUTP10061420	1/4" CHANNEL NUT WITH SPRING	\$1.34 each
UNINUTP1008	3/8" CHANNEL NUT WITH SPRING	\$1.29 each
UNIFITP1356	FLAT PLATE FITTING - CROSS BRACKET	\$26.46 each
UNIFITP1747	ANGLE FITTING - L BRACKET - HORIZ	\$17.39 each
UNIFITP1325	ANGLE FITTING - L BRACKET - VERT	\$8.44 each

## DUCT HARDWARE

### DUCT CONNECTOR FLEXIBLE - PER ROLL

<u>STOCK #</u>	<u>TYPE</u>	<u>PRICE</u>
DYNCPN4STK	NEOPRENE (BLACK) - 100' ROLL	\$701.20
DYNSMFN444STK	NEOPRENE (BLACK) FOR TDC - 100' ROLL	\$1,037.40
DYNSMFN100	NEOPRENE (BLACK) 3 X 6 X 3 - 100' ROLL	\$1,029.50
DYNCPV4STK	VINYL-FLEX (YELLOW) - 100' ROLL	\$530.75
DYNSMCT50STK	TEFLON (GREY) - 50' ROLL	\$488.25



### DUCT CONNECTOR FLEXIBLE - PER FOOT

<u>STOCK #</u>	<u>TYPE</u>	<u>PRICE</u>
DYNCPN4CUT	NEOPRENE (BLACK)	\$10.80
DYNCPV4CUT	VINYL-FLEX (YELLOW)	\$8.00
DYNSMCT50CUT	TEFLON (GREY)	\$14.70

### TDC MATERIALS

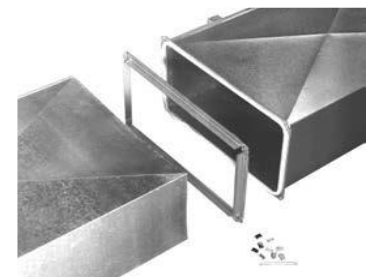
<u>STOCK #</u>	<u>DESCRIPTION</u>	<u>PRICE</u>
TDCCORNERS	TDC CORNERS - BOX OF 250	\$381.33
TDCCORNER1	TDC CORNER - EACH	\$1.74
CLIPTOOLXX	TDC CLIP TOOL	\$35.73
TOOLTDCCORNR	TDC CORNER TOOL	\$455.00
EASYROD12	EASY ROD FOR 1/2" CONDUIT - BOX OF 250	\$376.63
EASYROD12EA	EASY ROD FOR 1/2" CONDUIT - PER EACH	\$2.51



For TDC Clips see Commercial section, page 6.

### DUCTMATE FLANGE & ACCESSORIES

<u>STOCK #</u>	<u>DESCRIPTION</u>	<u>PRICE</u>
DM35FLANGE	DUCTMATE '35' GALV FLANGE - PER LENGTH	\$69.21
DM2535CLIP	CORNER CLIPS FOR DM 25/35 - BOX OF 500	\$267.64
DM35CLEAT	6" METAL CLEAT FOR DM 25/35 - BOX OF 500	\$509.49
DM35CORNER	STAR HOLE CORNERS FOR DM 35 - BOX OF 250	\$503.90





**DUCT HARDWARE**

**INSULATION FASTENERS**

<u>STOCK #</u>	<u>DESCRIPTION</u>	<u>PRICE</u>
DYNDST75XX	SPOT-ONS - 3/4" 1000 pack	\$49.00
DYNDST114X	SPOT-ONS - 1 1/4" 1000 pack	\$64.50
DYNDST200X	SPOT-ONS - 2" 1000 pack	\$95.00
DYNDST250X	SPOT-ONS - 2 1/2" 1000 pack	\$111.00
DYNSKC125X	STIK-ONS - 1 1/4" 100 pack	\$65.30
DYNSKC250X	STIK-ONS - 2 1/2" 100 pack	\$74.75



**MISCELLANEOUS DUCT HARDWARE**

<u>STOCK #</u>	<u>DESCRIPTION</u>	<u>PRICE</u>
DYND25XXXX	DIAL 1/4"	\$2.42
DYNDP25XXX	SPRING SLIDE BEARING 1/4"	\$1.50
DYNDPL25XX	SPRING SLIDE BEARING 1/4" LONG	\$1.94
DYNDP25SXX	SQUARE END BEARING 1/4"	\$1.57
DYNDP25LXX	SQUARE END BEARING 1/4" LONG	\$1.75
DYNDP50SXX	SQUARE END BEARING 1/2"	\$6.31
DYND38XXXX	DIAL 3/8"	\$3.68
DYNDP38XXX	SPRING SLIDE BEARING 3/8"	\$3.03
DYNDP38SXX	SQUARE END BEARING 3/8"	\$4.19
DYNDP38LXX	SQUARE END BEARING 3/8" LONG	\$4.79
DYNQC38SXX	QUADRANT REGULATOR 3/8" SQ. HOLE	\$15.15
DYNQC50RXX	QUADRANT REGULATOR 1/2" RD. HOLE	\$18.40
DYNQC50SXX	QUADRANT REGULATOR 1/2" SQ. HOLE	\$17.95
DYNBJ14XXX	BALL JOINT DAMPER BRACKET	\$8.32
DYNSB14XXX	SPLITTER DAMPER BRACKET	\$11.24
DYNDCS313X	BALL SWIVEL	\$9.02
DYNDL1XXX	SWIVEL-LOK	\$6.58
DYNDR35STK	DYN-O-RAIL 100 foot roll	\$374.33
DYNDR35CUT	DYN-O-RAIL per foot	\$5.00
DYDZSP50XX	1/2" SLIDE BEARING PIN	\$3.12
DYNADH38XX	ACCESS DOOR CLOSURE 3/8"	\$27.47
DYNADH50XX	ACCESS DOOR CLOSURE 1/2"	\$40.52
DYNDRS25XX	DIAL - A - MATIC REG. SET 1/4"	\$5.67
DYNDRS25LX	DIAL - A - MATIC REG. SET 1/4" LONG	\$7.50



## MULTI BLADE DAMPER HARDWARE

For parallel (PARA-LINK) and opposed action (OPPO-LINK) dampers

<u>STOCK #</u>	<u>DESCRIPTION</u>	<u>PRICE</u>	<u>UNITS REQUIRED FOR KIT</u>	
			<u>PARA-LINK</u>	<u>OPPO-LINK</u>
DYNPLB14XX	HI-BRACKET 1/4" PARA-LINK	\$9.53	1	1
DYNOLL14XX	LO-BRACKET OPPO-LINK c/w ROD	\$8.15		1
DYNDKP5XXX	BRONZE BUSHING 1/2" ID	\$1.30	2	4
DYNDKP5DXX	DELTRIN BUSHING 1/2" ID	\$1.12		
DYNDKP13XX	STRAP AND SET SCREW	\$1.87	2	4
DYNDKP50XX	PIN 1/2" D x 2 1/2" LONG	\$2.75	2	4
DYNDKP506X	PIN 1/2" D x 6" LONG	\$4.14		
DYNDKP506A	ADAPTOR PIN 1/2" SQ to 1/2" RD x 6" L	\$25.29		

## MISCELLANEOUS

<u>STOCK #</u>	<u>DESCRIPTION</u>	<u>PRICE</u>
FAU7720086	LATCH #772-0086	\$5.94
SOLDER	50/50 BAR SOLDER	\$54.94
WIRESTOVEP	STOVE PIPE WIRE	\$29.00
SPRAYPTBLK	SPRAY PAINT - CAN - BLACK	\$21.20
SPRAYPTSIL	SPRAY PAINT - CAN - SILVER	\$17.56
SPRAYPTWHT	SPRAY PAINT - CAN - WHITE	\$16.60
SPRYCOLDGALV	COLD GALVANIZING SPRAY	\$47.85
TEMPLATRCT	FITTING TEMPLATE - RECTANGLE	\$40.57
TEMPLATRND	FITTING TEMPLATE - ROUND	\$40.57
PADEVA3378	3" X 3" X 7/8" VIBRATION PAD	\$4.57
NYLSTRAP36	36" NYLON PULL TIE STRAP	\$3.06
NYLSTRAP48	48" NYLON PULL TIE STRAP	\$4.23
ROOFBLOX1	ROOF TOP BLOX	\$20.55
VAPORBAR11129126	VAPOR BARRIER 11 1/2" X 9 1/2" X 6"	\$11.47
VAPORBAR1311	VAPOR BARRIER 13 1/2" X 11" X 7 3/4"	\$11.47

